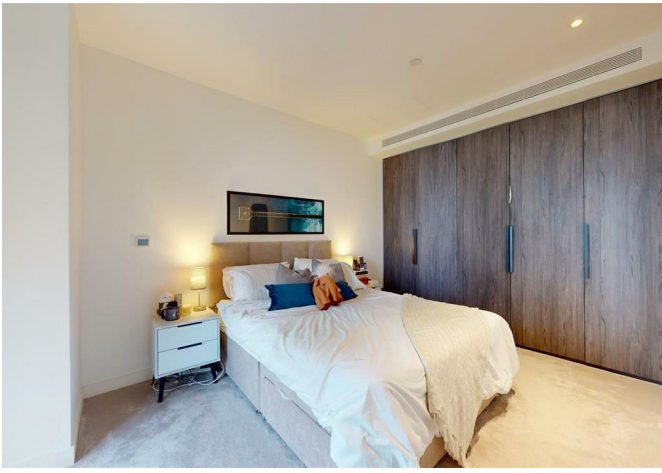




1 Wards Place, London, E14 9DU

**£3,141 Per month**



1 Wards Place, London,

£3,141 Per month

LONG LET - luxury one bedroom apartment set in the iconic Warden development, featuring a spacious open plan reception area with integrated kitchen, chic bathroom

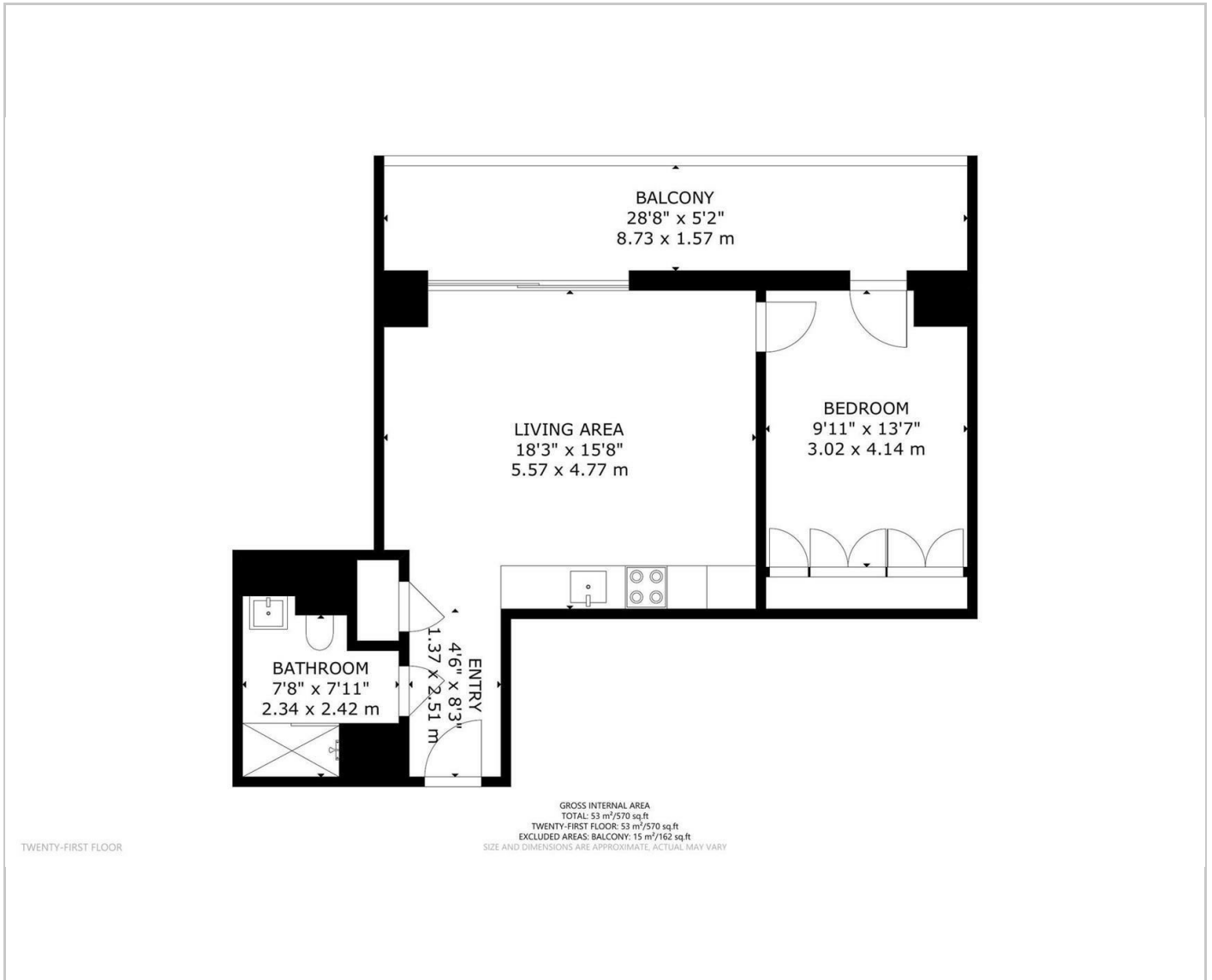
Ideally located in the centre of Canary Wharf, Warden London creates a perfect city oasis. The development features 24/7 concierge service and residents have exclusive access to a gym, swimming pool, cinema, sky bar and lounge located on the 53rd floor. Situated minutes away from Canary Wharf Underground / DLR Station.

## Key Features

- Stunning one bedroom
- Fully Furnished
- Residents Gym / Pool / Private Cinema
- Exclusive sky lounge and cocktail bar in the building
- Private balcony
- Moments away from Jubilee Line
- Wardian
- EPC: B



Council Tax Band: E



Energy E
Very energy e
(92 plus) A
(81-91)
(69-80)
(55-68)
(39-54)
(21-38)
(1-20)
Not energy eff
Englan

These particulars, whilst believed to be accurate are set out as a general outline only for guidance and do not constitute any part of an offer or contract. Intending purchasers should satisfy themselves by inspection or otherwise as to their accuracy. No person in this firm's employment has the authority to make or give any representation or warranty in respect of the property.

Tel: 02037807991 | Email: [enquiry@barrain.co.uk](mailto:enquiry@barrain.co.uk)  
[www.barrain.co.uk](http://www.barrain.co.uk)